



## Maximised Space, Modern Living

Mayan 199 is designed to make everyday living feel spacious, comfortable, and easy.

The master bedroom is privately positioned at the front of the home, complete with walk-in robe and ensuite, while additional bedrooms are thoughtfully placed for family convenience.

At the heart of the home, the kitchen, living, and meals area creates a welcoming shared space, supported by a walk-in pantry. A separate lounge provides a quiet retreat for relaxation or family time.

3  2  2 

### Size

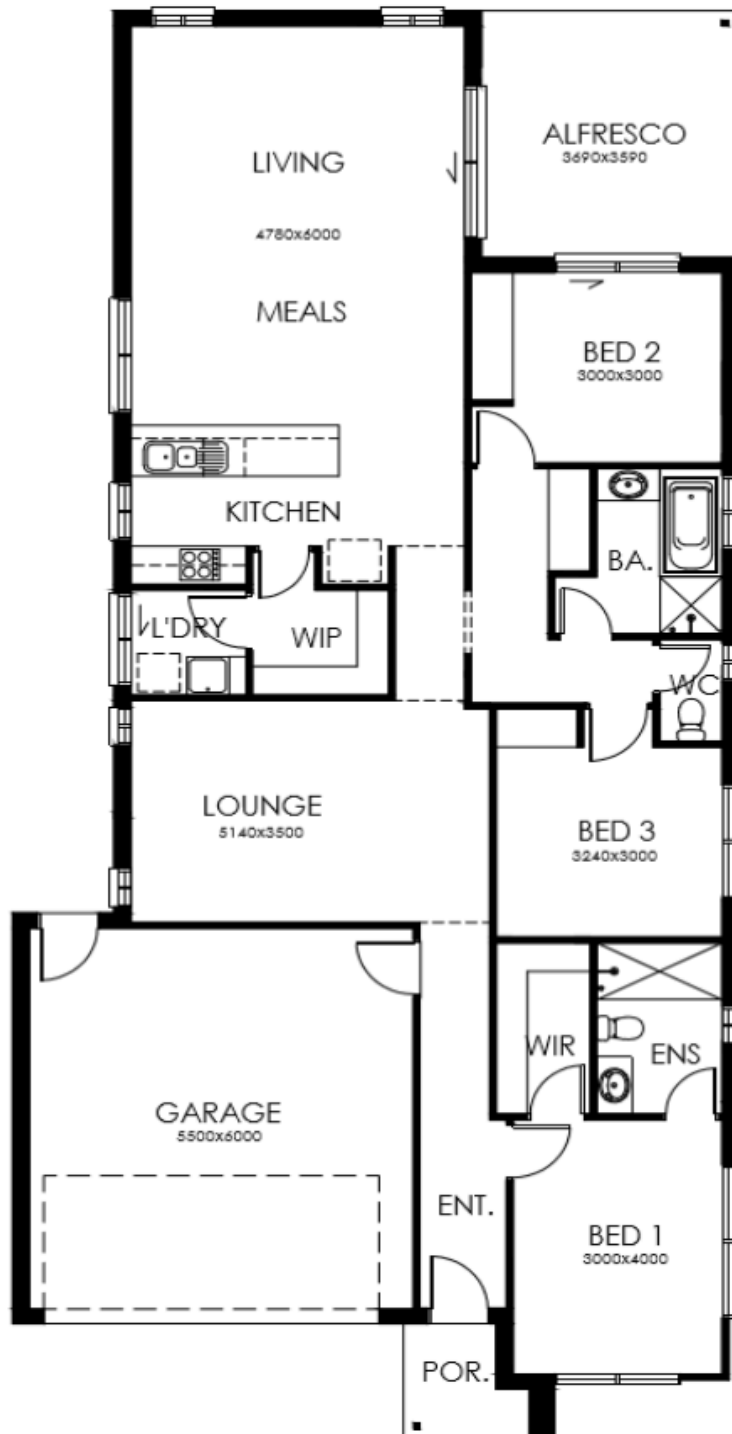
200.91sqm

### Width

10.41m

### Length

22.49m



## Hobart

Showgrounds Pavillion  
Cnr Brooker Hwy & Elwick Rd  
Glenorchy TAS 7010  
hobart@creativehomestas.com.au

## Launceston

132 York St  
Launceston TAS 7250  
launceston@creativehomestas.com.au

[creativehomestas.com.au](http://creativehomestas.com.au)

03 6272 3000  
Licence No. 52713845

