



Space, Privacy & Everyday Flow

The Belize 205 is a generous family design that balances privacy and open living. Four bedrooms line one side of the home, including a master suite with walk-in robe and ensuite, while the opposite side is dedicated to a spacious open-plan kitchen and living area. This central hub flows effortlessly to an alfresco entertaining space, ideal for modern indoor-outdoor living.

4  2  2 

Size

205.03sqm

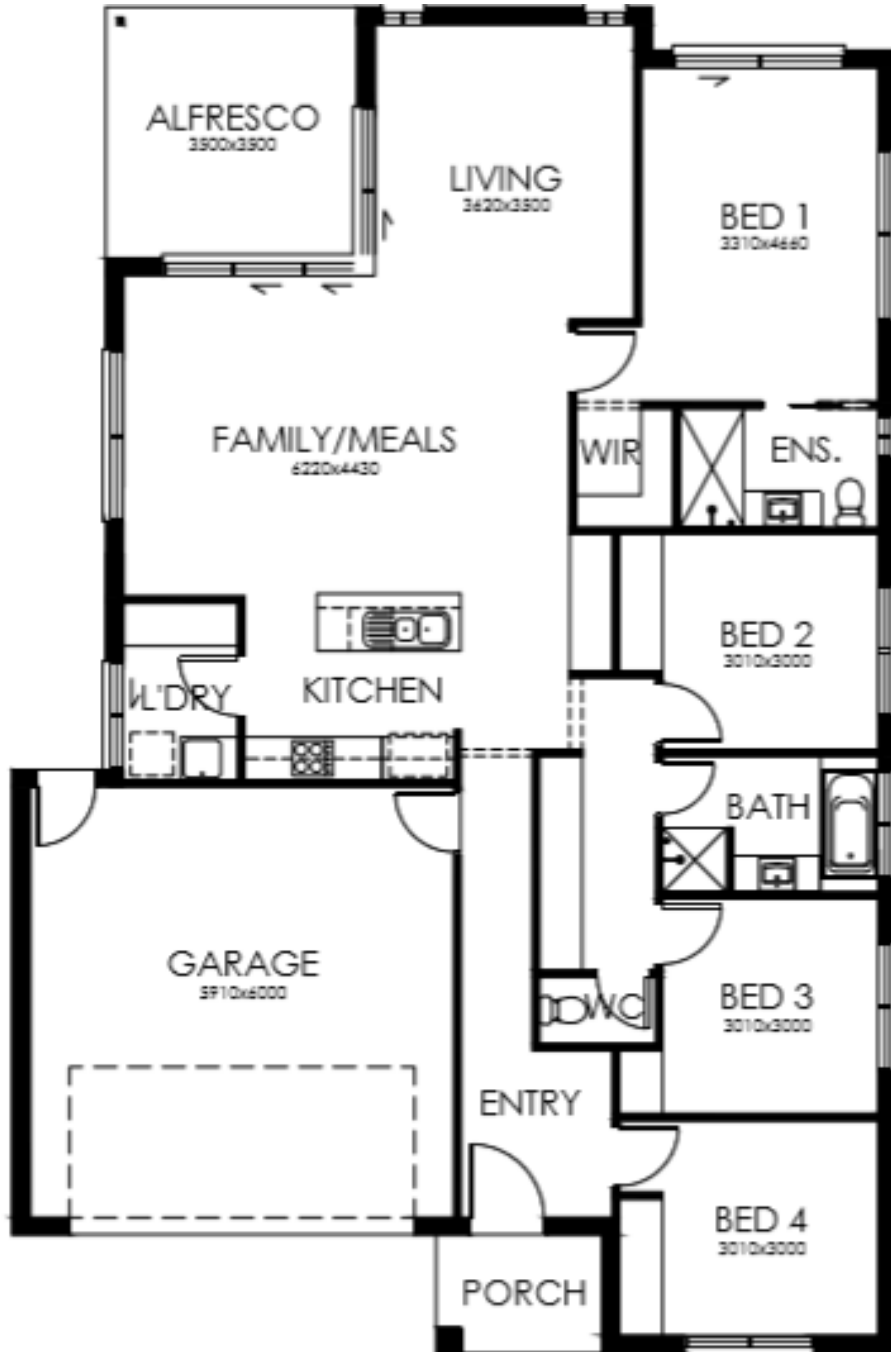
Width

12.3m

Length

18.75

Belize 205



Hobart

Showgrounds Pavillion
Cnr Brooker Hwy & Elwick Rd
Glenorchy TAS 7010
hobart@creativehomestas.com.au

Launceston

132 York St
Launceston TAS 7250
launceston@creativehomestas.com.au

creativehomestas.com.au

03 6272 3000
Licence No. 52713845

